



# BRICK LOAD CELL



## OVERVIEW

Aluminum single point load cell. Available capacities 50kg-1000kg. NTEP Approved capacities excluding 635kg and 1000kg.

Other sizes and capacities are available for quote. Please call for lead time and availability on all products before quoting customer.



## NTEP CERTIFIED

Certificate of Conformance #08-076

## CAPACITIES

50KG, 75KG, 100KG, 150KG, 200KG, 250KG, 300KG, 500KG,  
\*635KG, \*1000KG

(\*NON-NTEP)

## OVERVIEW

Aluminum single point load cell. Available capacities 50kg-1000kg. NTEP Approved capacities excluding 635kg and 1000kg.

NTEP Rated, FM Approved  
Class III, 5,000 Division, Single Cell

## PERFORMANCE SPECIFICATIONS

Rated Output: 2.00 mV/V  $\pm$ 10%  
Safe Overload: 150% FS  
Excitation Voltage: 10V-20V AC/DC  
Input Resistance: 410  $\pm$ 10  $\Omega$   
Output Resistance: 350  $\pm$ 3  $\Omega$   
Zero Balance: +1.00% FS

Seal Type: Environmentally Sealed, Poted, IP67  
Non-linearity:  $\pm$ 0.02% FS  
Hysteresis:  $\pm$ 0.02% FS  
Repeatability:  $\pm$ 0.02% FS

Creep:  $\pm$ 0.03% FS

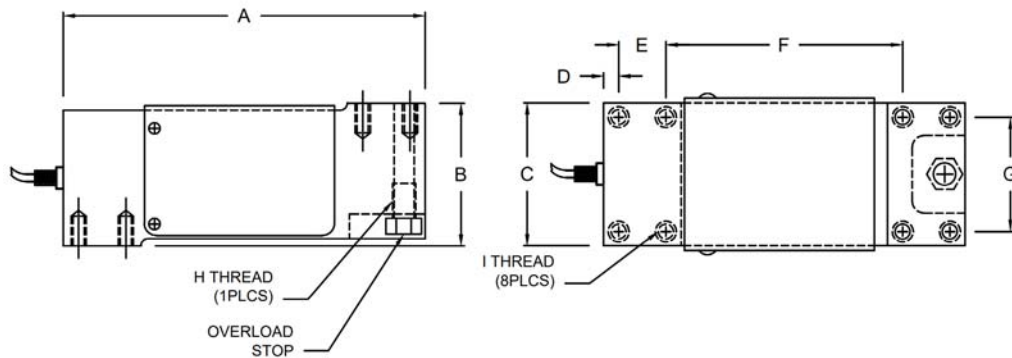
Compensated Temperature Range: -10°C to +40°C  
Temperature Effect on Zero:  $\pm$ 0.002%FS/°C  
Temperature Effect on Output:  $\pm$ 0.001%FS/°C

Insulation Resistance: >5000 Megaohms  
Load Cell Cable: 4 Conductor, 10 ft.

Load Cell Wiring:  
GRN (+EXC)  
BLK (-EXC)  
WHT (+SIG)  
RED (-SIG)  
BRAID/YELLOW: SHIELD

## DIMENSIONS

	A	B	C	D	E	F	G	H	I
50 to 1000KG	7.52	2.95	2.95	0.31	0.98	4.92	2.36	1/2-20UNFx0.50dp	5/16-18UNCx0.62dp



Max Platform Sizes:  
50-500kg 600 x 600 mm  
635-1000kg 800 x 800 mm

# LOAD CELLS – BRICK LOAD CELL



## AVAILABLE OPTIONS



### CG-50-2

NTEP Medium Envelope  
60KG, 100KG, 250KG, 500KG  
Listed prices are for aluminum cells

- #2020 - 60KG NTEP
- #2021 - 100KG NTEP
- #2022 - 250KG NTEP
- #2023 - 500KG NTEP

### CG-50

NTEP Large Envelope  
250KG, 500KG, 1000KG  
Listed prices are for aluminum cells

- #2103 - 250KG NTEP
- #2105 - 500KG NTEP
- #2107 - 1000KG (Non-NTEP)

Other sizes and capacities are available for quote. Please call for lead time and availability on all products before quoting customer.