



DOUBLE-ENDED BEAM CELLS

OVERVIEW

Alloy steel double ended beam load cell commonly used in bins, hoppers and tanks. Available capacities 1K-125K. Larger capacities (75K-125K) have square center.



FM APPROVED

US COC: FM17US0300X Canada COC: FM17CA0152X

CAPACITIES

1k, 1.5K, 2K, 2.5K, 4K, 5K, 10K, 15K, 20K, 25K, 35K, 50K, 75K, 100K, 125K

OVERVIEW

Alloy steel double ended beam load cell commonly used in bins, hoppers and tanks. Available capacities 1K-125K. Larger capacities (75K-125K) have square center.

PERFORMANCE SPECIFICATIONS

Rated Output: 3.00 mV/V \pm 0.1%
Safe Overload: 150% FS

Excitation Voltage: 10-20V AC/DC

Input Resistance: 700 \pm 10 ohms
Output Resistance: 700 \pm 5 ohms

Zero Balance: \pm 1.00% FS
Non-linearity: \pm 0.03% FS
Hysteresis: \pm 0.02% FS
Repeatability: \pm 0.01% FS
Creep: \pm 0.02% FS

Seal Type: Environmentally Sealed
Load Cell Resistance: 350 ohms
Load Cell Cable: 4 Conductor, 20ft

Compensated Temp. Range: -10° C to +40° C

Temp. effect on Zero: \pm 0.0027%FS/°C
Temp. effect on Output: \pm 0.0015%FS/°C

Insulation Resistance: >5000 megaohms

Load Cell Cable
1K-5K: 4 Conductor (50 ft)
10K-75K: 4 Conductor (50 ft - Braided Shield)

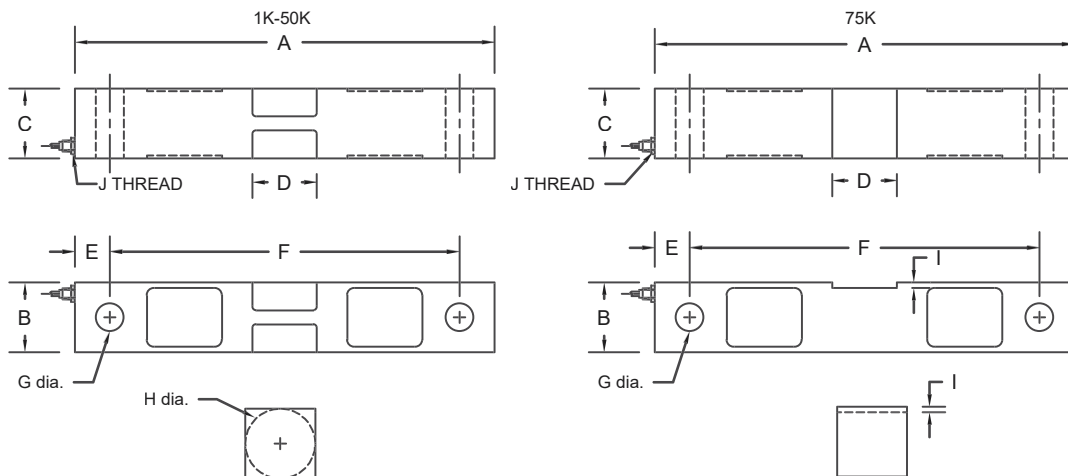
Load Cell Wiring

Green: +EXC
Black: -EXC
White: +SIG
Red: -SIG
Braided/Yellow: Shield

Materials: Alloy Steel

Tolerances unless otherwise specified:
.XX: \pm 0.01
.XXX: \pm 0.005
Fractions: \pm 1/16"
Angles: \pm 1/2"

	A	B	C	D	E	F	G	H	I	J
1K - 5K	7.50	1.25	1.25	1.15	0.62	6.25	0.50	1.25	-	1/4-18 NPT
10K - 25K	8.75	1.94	1.44	2.00	0.62	7.50	0.81	2.00	-	1/4-18 NPT
35K	8.75	2.50	1.50	2.00	0.62	7.50	0.81	2.50	-	1/2-14 NPT
50K	13.50	2.94	2.44	3.25	1.00	11.50	1.31	3.00	-	1/2-14 NPT
75K	13.50	2.94	2.44	3.25	1.00	11.50	1.31	-	0.17	1/2-14 NPT
100K - 125K	18.50	3.94	2.94	3.25	1.75	15.00	1.63	-	0.25	1/2-14 NPT



LOAD CELLS – DOUBLE-ENDED BEAM CELLS

AVAILABLE OPTIONS



COTI CG-16

Alloy Steel
Double Ended Beam

#2359 – 1K
#23591 – 1.5K
#23592 – 2K
#23593 – 2.5K
#23594 – 3K
#23595 – 5K
#23596 – 10K
#23597 – 15K
#23598 – 20K
#23599 – 25K
#2360 – 35K
#2361 – 50K
#2370 – 75K
#2371 – 100K
#2372 – 125K

COTI CG-16-SSW (Stainless Steel)

Stainless Steel, Welded
Double Ended Beam

#2380 – 1K
#2390 – 1.5K
#2391 – 2K
#2400 – 2.5K
#2410 – 3K
#2420 – 5K
#2421 – 10K
#2422 – 15K
#2430 – 20K
#24301 – 25K
#2431 – 35K
#24330 – 50K
#243301 – 75K

*Other sizes and capacities are available for quote.
Please call for lead time and availability on all
products before quoting customer.