



SHEAR BEAM LOAD CELL

OVERVIEW

Available in both stainless and alloy steel.

Commonly used in small tanks, hoppers, platforms and floor scales. Common shear beam. Threaded hole. NTEP capacities 250lb - 20K.

*100-500lb height dimension is 1.25" rather than 1.00"



NTEP CERTIFIED

Certificate of Conformance #08-074A1, 17-121

CAPACITIES

*100LB, 250LB, 500LB, 750LB, 1K, 1.5K, 2K, 2.5K, 4K, 5KSE, 5KLE, 10K, 15K, 20K

(*NON-NTEP)

OVERVIEW

Single ended beam load cell commonly used in small tanks, hoppers, platforms and floor scales. Common shear beam.

*Manufacturers may be substituted, but you will get the same manufacturer cell with each order.

PERFORMANCE SPECIFICATIONS

Rated Output: 3.00 mV/V \pm 0.25%
 Safe Overload: 150% FS
 Excitation Voltage: 10V AC/DC (15V MAX).
 Input Resistance: 385 \pm 10 Ω
 Output Resistance: 250 \pm 3 Ω
 Zero Balance: \pm 1.00% FS

Seal type: Environmentally Sealed IP67
 Non-linearity: \pm 0.15% F.S.
 Hysteresis: \pm 0.02% F.S.
 Repeatability: \pm 0.01% FS

Creep: \pm 0.02% FS in 30 minutes
 Compensated Temperature Range: -10°C to +40°C

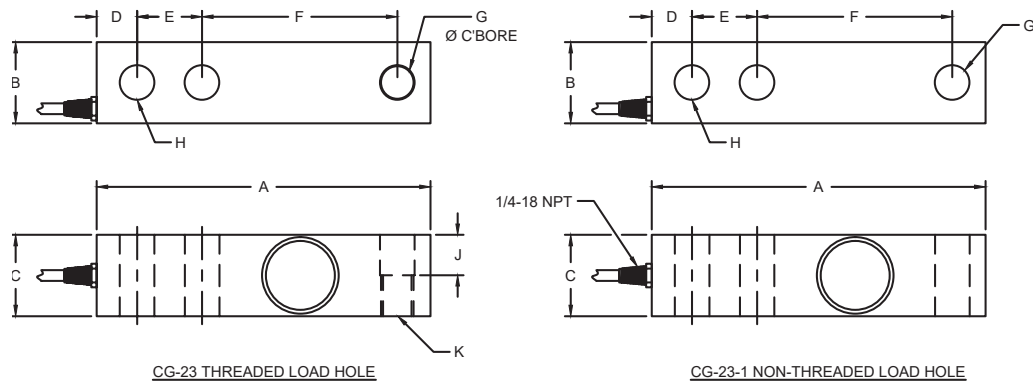
NTEP Rated
 FM Approved
 Class III, 10,000 Division, Multiple Cell

Material: Available in Alloy Steel and Stainless Steel
 Finish: Nickel Plated

Load Cell Wiring
 GR (+Exc)
 BL (-Exc)
 WH (+SIG)
 RE (-SIG)
 BRAID/YELLOW: SHIELD

DIMENSIONS

| | A | B | C | D | E | F | G | H | J | K |
|---------------|------|------|------|------|------|------|------|------|------|------------|
| 100LB - 750LB | 5.12 | 1.25 | 1.25 | 0.62 | 1.00 | 3.00 | 0.53 | 0.53 | 0.62 | 1/2-20 UNF |
| 1K - 5KSE | 5.12 | 1.25 | 1.25 | 0.62 | 1.00 | 3.00 | 0.53 | 0.53 | 0.62 | 1/2-20 UNF |
| 5KLE - 10K | 6.75 | 1.50 | 1.50 | 0.75 | 1.50 | 3.75 | 0.78 | 0.78 | 0.75 | 3/4-16 UNF |
| 15K - 20K | 8.88 | 2.00 | 1.50 | 1.00 | 2.00 | 4.88 | 1.03 | 1.03 | 1.00 | 1-14 UNF |



LOAD CELLS – SHEAR BEAM LOAD CELL



AVAILABLE OPTIONS



LOCOSC NTEP

NTEP Approved
Alloy Steel Construction

#2994 1K NTEP
#2995 2.5K NTEP
#2997 5K NTEP

COTI NTEP CG-23

NTEP Approved
FM Approved
Alloy Steel Construction

#1919 250# NTEP
#3001 500# NTEP
#19192 750# NTEP
#2998 1K NTEP
#3000 2.5K NTEP
#3005 4K NTEP
#30001 5K NTEP
#3007 5K-LE NTEP
#3008 10K-LE NTEP
#3009 15K-LE NTEP
#3010 20K-LE NTEP

COTI NTEP CG-23-SSW-03 (Stainless Steel)

FM Approved
Welded Stainless Steel Construction

#243330 1K-SS NTEP
#243331 2.5K-SS NTEP
#24334 5K-SS NTEP
#24335 10K-SS NTEP

*Manufacturers may be substituted, but you will get the same manufacturer cell with each order.