



300 SERIES / CG59-M
SINGLE ENDED BEAM MOUNT

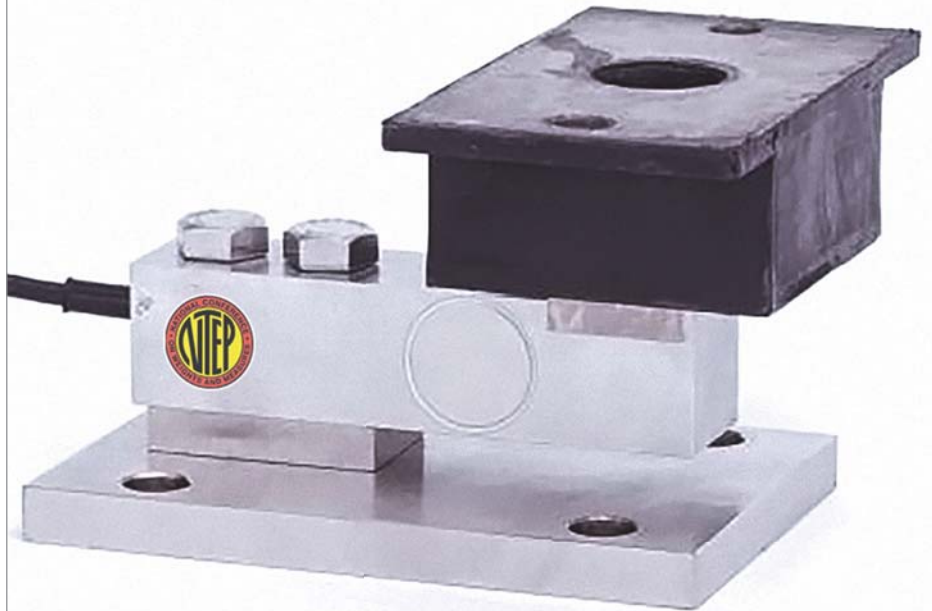
OVERVIEW

The CG-59M series Tank Mount is designed for use in light to medium capacity tanks, bins, hoppers and conveyors. The unique neoprene isolation pad accommodates vibration, thermal expansion and alignment. Ideal for indoor or outdoor process control applications.

Applications: small tanks, hoppers, conveyors, in-motion weighing, small platform scales.

Load Cell: Alloy Steel (Nickel Plated) or Stainless Steel

Assembly: Stainless Steel



NTEP CERTIFIED

Certificate of Conformance #08-074A1

CAPACITIES

25lb, 50lb, 75lb, 100lb, 150lb, 250lb, 500lb, 1k, 1.5K, 2K, 2.5K, 4K, 5KSE

OVERVIEW

The CG-59 series Tank Mount is designed for use in light to medium capacity tanks, bins, hoppers and conveyors. The unique neoprene isolation pad accommodates vibration, thermal expansion and alignment. Ideal for indoor or outdoor process control applications.

Applications: small tanks, hoppers, conveyors, in-motion weighing, small platform scales.

PERFORMANCE SPECIFICATIONS

Safe Overload: 150% FS
 Full Scale Output: 3.00 mV/V
 Excitation Voltage: 10-15V AC/DC
 Load Cell Resistance: 350 ohms
 Load Cell Cable: 4 Conductor, 20ft
 Operating Temperature Range: -20° C to +60° C

Materials:

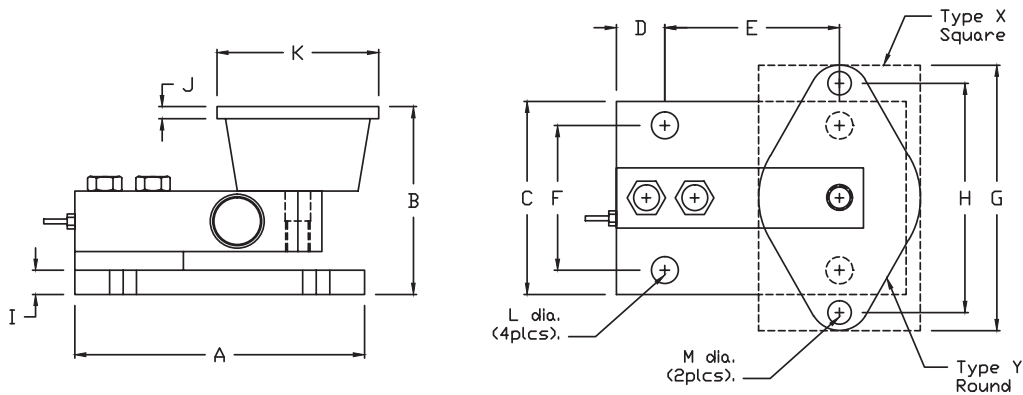
Load Cell: Alloy Steel (Nickel Plated) or Stainless Steel
 Assembly: Stainless Steel

Tolerances unless otherwise specified:

.XX: ±0.01
 .XXX: ±0.005
 Fractions: ±1/16"
 Angles: ±1/2"

DIMENSIONS

	A	B	C	D	E	F	G	H	I	J	K	L	M	TYPE
25lb - 250lb	4.00	3.13	3.00	0.37	3.25	2.25	3.88	3.00	0.50	0.22	2.38	0.34	0.34	Y
500lb	6.00	3.88	4.00	1.00	4.00	3.00	5.50	4.13	0.50	0.25	3.38	0.44	0.56	Y
1K	6.00	4.00	4.00	1.00	4.00	3.00	5.13	4.13	0.50	0.25	3.00	0.44	0.44	X
1.5K - 2.5K	6.00	4.00	4.00	1.00	4.00	3.00	6.25	5.00	0.50	0.38	4.62	0.44	0.44	X
4K - 5KSE	6.00	4.50	4.00	1.00	4.00	3.00	6.25	5.00	1.00	0.38	4.62	0.47	0.56	X



300 SERIES – SINGLE ENDED BEAM MOUNT



AVAILABLE OPTIONS

CG-59M-SSW / 300 Series (Stainless Steel)

Stainless steel, welded cell w/ stainless steel mount
Dealer net pricing per cell & mount



Available Capacities: 1K, 1.5K, 2K, 2.5K, 4K, 5KSE

*Please be sure to call for the availability of the capacities and quantities you and your customer are wanting. There may be lead times associated with the order from 1 week to approx. 6 weeks or longer depending on quantities.

*The following prices are for a cell and mount in the designated material that is stated. Lots of 3 or 4 mounts with cells also include 25' of cable and a stainless-steel junction box with signal trim card. All mount orders are plus freight.

*Please see the back page for dealer net prices and technical drawings

**Please remember, lead times will vary depending on stock at time of order. Please call before quoting customer lead times for delivery. All mounts will ship plus freight charges and depending on the amount ordered, may ship UPS or LTL. All mounts ordered in lots of 3 or 4 will receive 25' of cable and a 4-cell stainless steel junction box with signal trim card.

Other sizes and capacities are available for quote. Please call for lead time and availability on all products before quoting customer.