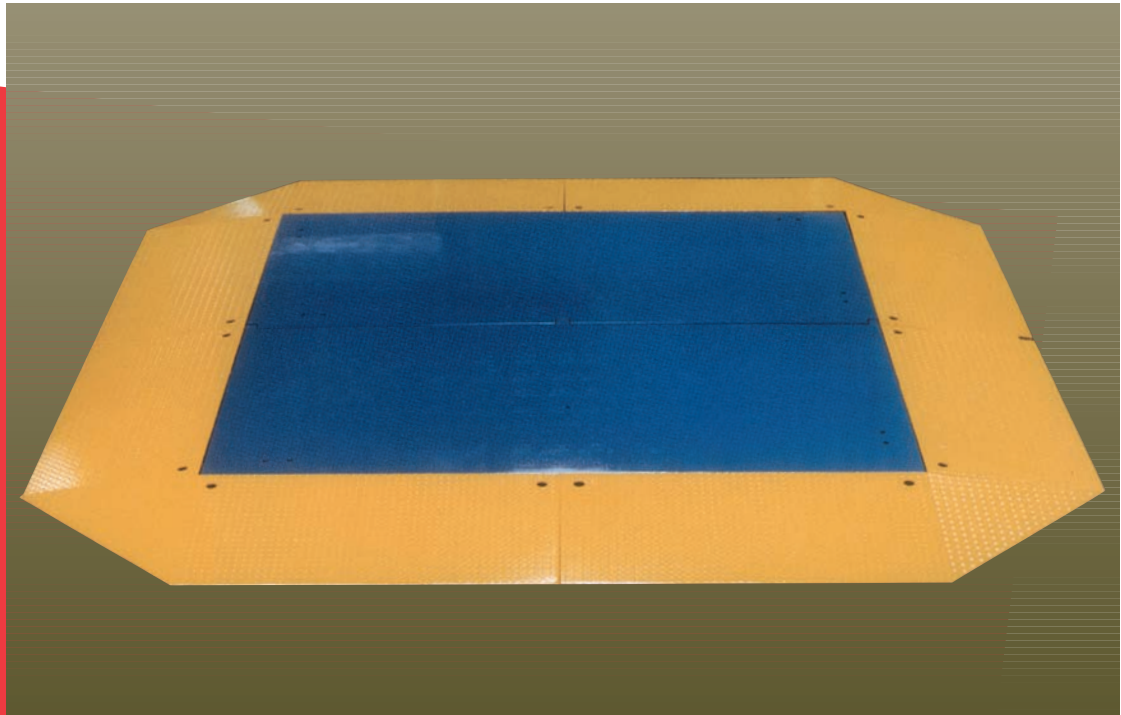
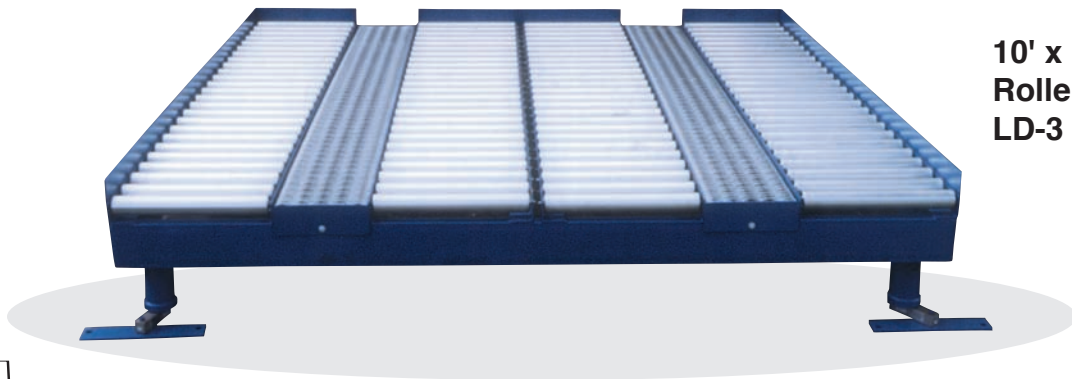


# INSCALE™



10' x 10'  
20,000 lb.  
LOW PROFILE  
SCALE

Air Freight scales are now an INSCALE standard. Shown above is a pancake scale with wrap-around ramps. Also offered is a "LD3" roller deck scale.



10' x 10'  
Roller Deck  
LD-3



# INSCALE™ Low Profile Floor Scale

Indiana Scale Company, Inc.

Terre Haute, IN 47804

# SPECIFICATIONS

MODEL	CAPACITY	SIZE (FT)	MODEL	CAPACITY	SIZE (FT)
P2K44	2000 lbs. x .5	4 x 4	P20K44	20000 lbs. x 5	4 x 4
P2K57	2000 lbs. x .5	5 x 7	P20K57	20000 lbs. x 5	5 x 7
P2K66	2000 lbs. x .5	6 x 6	P20K66	20000 lbs. x 5	6 x 6
P5K44	5000 lbs. x 1	4 x 4	P20K69	20000 lbs. x 5	6 x 9
P5K45	5000 lbs. x 1	4 x 5	P20KD810	20000 lbs. x 5	8 x 10
P5K46	5000 lbs. x 1	4 x 6	P20KD1010	20000 lbs. x 5	10 x 10
P5K57	5000 lbs. x 1	5 x 7			
P5K66	5000 lbs. x 1	6 x 6			
P10K44	10000 lbs. x 2	4 x 4			
P10K57	10000 lbs. x 2	5 x 7			
P10K66	10000 lbs. x 2	6 x 6			
P10K69	10000 lbs. x 2	6 x 9			
P10K710	10000 lbs. x 2	7 x 10			

For special sizes consult factory.

Includes: summing card, J box, platform(s), ramps and load cells

- Corner capacity:** 50% of total capacity
- Section capacity:** 100% of total capacity
- Summing junction:** Parallel signal trim summing card with individual corner adjustment located inside a junction box
- Finish:** Alkyd Enamel - DTM
- Construction:** 1/2" deck plate, grid core, 3/8" bottom skin w/(3) center supports to prevent sagging
- Suspension:** Fully electronic load cells on shock absorbing spherical washers
- Load cells:** Low profile weathertight shear beam type load cells
  - Overload capacity: 150%
  - Output: 3MV/V at rated capacity
  - Excitation: 15VDC
  - Accuracy: ±0.1% of applied load or 1 division
  - Temperature range: -10°F to 130°F operating
  - Number of cells: Series K: 4  
Series KD: 6
- Ramps:** Heavy duty Diamond Plate Construction
  - 2 or 4 way access
  - 10° or 20% slope

---

**Distributed by:**